



Edge Hill  
University

---

## Introduction

---

Dear applicant,

Since Edge Hill became a University in 2006, our Faculty of Health and Social care has been on an impressive journey. In my role as Pro Vice-Chancellor and Dean of the Faculty of Health & Social Care, I am proud that we offer a wide-range of high quality and responsive programmes for those working in, or seeking to work in, the health and social care sectors.

Our students and their outcomes are at the heart of all that we do. Whatever their subject of interest, we aim to support every student through all stages of their career from undergraduate study and gaining workplace experience, through to continuing professional development and postgraduate study.

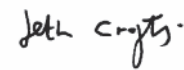
With leading edge clinical skills facilities including ward simulations with industry standard equipment we give students as realistic a learning experience as possible. We have an excellent reputation regionally and nationally.

Throughout this pack you will discover that Edge Hill University is “a great success story... an institution that improves and impresses year after year” (*Times Higher Education*).


Building on our success Edge Hill is committed to developing an undergraduate medical programme and has significant resources to invest in this. Key to this is you. In this role, you have an opportunity to make a major strategic contribution to the development of medical education at Edge Hill University.

If you wish to discuss this opportunity further then you can contact me or my colleague Professor Clare Austin by email at **Seth.Crofts@edgehill.ac.uk** or **Clare.Austin@edgehill.ac.uk**.

With best wishes and good luck,



Seth Crofts  
Pro Vice-Chancellor  
and Dean of the Faculty of Health & Social Care



Edge Hill University



## About the University

Edge Hill University is based on an attractive, award-winning 160-acre campus in Lancashire, close to Liverpool and Manchester. The institution has been providing higher education for more than 130 years, with a mission to create opportunity from knowledge. The University is an academic community comprising more than 10,000 full time undergraduate and postgraduate students and a further 6,000 on part time and professional development programmes.

Edge Hill is ranked as Gold in the **Teaching Excellence Framework (TEF)**, the government's evaluation of excellence in teaching quality, learning environment and student outcomes. Gold is the highest possible TEF rating, indicating that the institution is "of the highest quality found in the UK" and is "delivering consistently outstanding teaching, learning and outcomes for its students." Only one in five UK higher education institutions are ranked as Gold.

Edge Hill is one of the select few universities to have held the coveted UK **University of the Year** title, awarded by *Times Higher Education* (2014/15). Recent successes include being ranked in the top 10 for **teaching** by *The Times/Sunday Times Good University Guide* 2017, top in the North West for **student experience** (*Times Higher Education* 2017), and top in the UK for **student accommodation** in the 2017 WhatUni Awards.

In our peer group of the 60+ modern, diversified universities we are top in England in the WhatUni 2017 **University of the Year** rankings, as well as in the **Courses and Lecturers** and **Facilities** categories. Edge Hill also comes top in the UK for **student support** (WhatUni 2017) and **social mobility** (CentreForum, 2014).

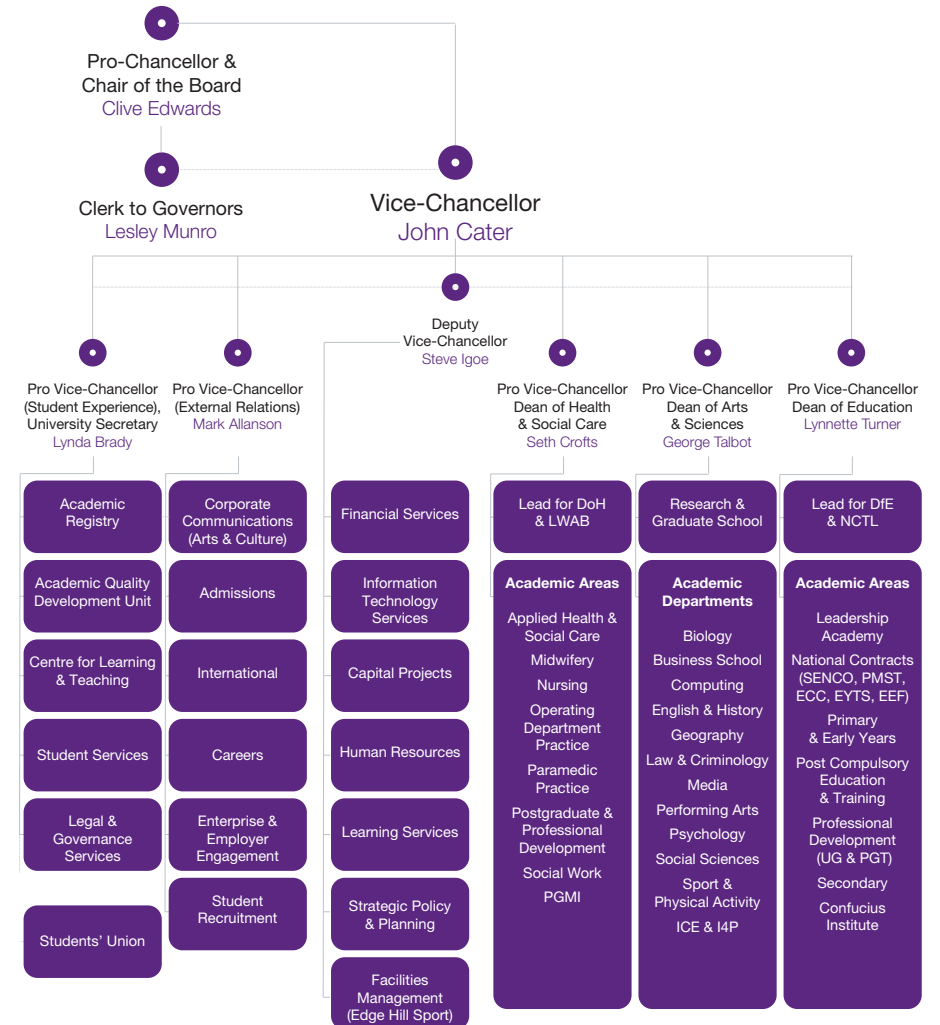
When Edge Hill was awarded University of the Year title for 2014/15, *Times Higher Education* described it as *"a great success story...an institution that improves and impresses year after year"*. The award recognised its outstanding achievements in student satisfaction, staff engagement, graduate employment and innovation as well as its strengthening research profile, investment and growth. It also celebrated Edge Hill University's distinct role in *"transforming lives"* – reflecting a distinctive philosophy of creating opportunity from excellence.



About the University



## University Organisation chart





# Award-Winning Workplace

## Award-Winning Workplace

Edge Hill University has 3,647 staff working across three Faculties and a range of professional support services. Most staff are based on our 160-acre campus in Ormskirk with others based in Manchester and the US.

The University has been ranked **Best University Workplace** (*Times Higher Education* 2015), judged **Best UK Employer** (European Business Awards 2016) and Highly Commended for **Workplace of the Year** in *Times Higher Education* Leadership and Management Awards 2017. Edge Hill was awarded an Athena SWAN Institutional Bronze Award on 1st October 2015.

*"Edge Hill University is an environment in which you can flourish and achieve your full potential. Our award-winning Ormskirk campus is an excellent place to work, and colleagues receive competitive salaries, with high quality pension provision and excellent holidays alongside a wide range of staff social and well-being benefits"* – John Cater, Vice-Chancellor





## Region

---

Located in the heart of the North West, Edge Hill University is situated close to the thriving market town of Ormskirk and the vibrant cities of Liverpool and Manchester.

The seaside resort of Southport is nearby and the University is only a short distance from stunning areas of unspoilt natural beauty, such as the sand dunes and pinewoods of Formby.

Described as 'the best the best place in England to bring up a family' (by *The Telegraph*, reporting on The Family Friendliness Index), the region has excellent schools, nurseries and green spaces.



Region



## Faculty of Health & Social Care

---

The Faculty of Health and Social Care is one of the largest providers of health and social care education in the North West of England. It offers a wide range of undergraduate and postgraduate programmes in disciplines including nursing, midwifery, paramedic practice, operating department practice, social work, nutrition, counselling, dentistry and public health.

The Faculty has an extensive portfolio of medical education programmes for which it has an excellent reputation. Housed with the Postgraduate Medical Institute these include well-established programmes relating to medical education and leadership. In the last three years it has been awarded two major contracts from Health Education England North West to deliver work-based postgraduate medical education and medical leadership (delivered in partnership with The Royal College of Physicians) to medical trainees throughout the North West. Indeed Edge Hill has held contracts for the delivery of work-based medical education and/or leadership to medical trainees in the region since 2009.

The Postgraduate Medical Institute delivers a suite of highly successful masters programmes in surgery and medicine (run since 2008) in partnership with Wrightington, Wigan and Leigh NHS Foundation Trust. The programmes have more than 25 pathways facilitating recruitment into a wide range of specialities which are continuously expanding. All are supported by expert consultants. The programme team have very strong international clinical links and networks which support and facilitate the significant recruitment of excellent international students onto the programmes. The programmes have a strong international reputation. The Faculty works closely with the Royal College of Physicians and Surgeons in terms of co-delivery and accreditation of programmes. It has close relationships with a wide range of major NHS Trusts and health and social care organizations in the region. Edge Hill has a large faculty of Honorary Clinical appointees who make major contributions to the development and delivery of its medical programmes.

Research is a key priority for the Faculty. Of particular relevance to the current post is the faculty's strong reputation in medical and clinical education research. Research in this area is led by Professor John Sandars and Professor Jeremy Brown and involves cross Faculty, multi-professional working and close collaboration with external healthcare professionals, commissioners and professional bodies. This provides a strong evidence base for the development of curricula which promotes preparedness for practice and transfer of learning into the clinical environment. The successful candidate will be strongly encouraged to become part of this research team.



## Medical Education at Edge Hill

---

Building on these successes, Edge Hill is committed to developing an undergraduate medical programme and has significant resources to invest in this. Key to this is appointment of a Director of Medical Education.

Edge Hill recognises the need to develop an undergraduate medical programme which will equip the doctors it produces with the knowledge, skills and values to work in the rapidly changing global healthcare environments of today, tomorrow and the future. Professionalism, leadership and management, social responsibility, innovation, patient safety and an understanding of community healthcare challenges will be key parts of the curriculum. We envisage high levels of patient contact throughout the programme which includes significant exposure to primary care and goes beyond general practice.

We are committed to working closely with other departments both within the Faculty of Health and Social Care and in the wider University to embed inter-professional learning and team working. It will be embedded in the local community and will develop and support initiatives to support widening participation into medicine.

Development of an undergraduate medical programme has high levels of Faculty and Institutional support. Its development will be supported by appropriate staffing, including new appointments, and relevant consultancy input. It has strong support from local healthcare providers in both primary, community and secondary care. Edge Hill has excellent facilities and there is a commitment for further development.



## Facts and Figures

### Key Performance Indicators

Year Ending 31 July	2016	2015	2014	2013	2012
Total income in £'000	128,127	123,935	115,376	108,541	99,163
Surplus for re-investment in £'000	21,637	21,247	17,899	17,693	13,036
Cash generated by activities in £'000	31,699	30,165	22,760	25,990	16,131
Cash for investment £'000	38,073	29,029	21,127	32,359	39,611
Financial worth of the University in £'000	171,240	162,796	147,316	108,347	85,160
Applications for University FT UG programmes (1)	19,767	19,133	18,931	19,296	18,867
Total number of students of the University (2)	15,543	16,170	16,750	18,483	22,393
Percentage of staff who rate the University as a good or excellent employer (3)	93%	94%	92%	91%	89%
Employee turnover (4)	6.6%	5.6%	6.9%	8.8%	10.4%
Level of University staff absence	3.6%	3.2%	3.4%	3.4%	3.0%

(1) Based on UCAS statistics

(2) Based on HESA Student Record

(3) From the University's independently scrutinised Staff Survey

(4) Based on establishment employees who left for any reason



---

Edge Hill University  
St Helens Road  
Ormskirk  
Lancashire  
L39 4QP  
United Kingdom



[edgehill.ac.uk](http://edgehill.ac.uk)



[facebook.com/edgehilluniversity](https://facebook.com/edgehilluniversity)



[twitter.com/edgehill](https://twitter.com/edgehill)



[instagram.com/edgehilluniversity](https://instagram.com/edgehilluniversity)

---